

## Research



**Cite this article:** Lafferty KD *et al.* 2018 Local extinction of the Asian tiger mosquito (*Aedes albopictus*) following rat eradication on Palmyra Atoll. *Biol. Lett.* **14**: 20170743. <http://dx.doi.org/10.1098/rsbl.2017.0743>

Received: 5 December 2017

Accepted: 1 February 2018

**Subject Areas:**

ecology, environmental science, health and disease and epidemiology

**Keywords:**

secondary extinction, extirpation, *Rattus*, *Culex*

**Author for correspondence:**

Kevin D. Lafferty

e-mail: [lafferty@lifesci.ucsb.edu](mailto:lafferty@lifesci.ucsb.edu)

Electronic supplementary material is available online at <https://dx.doi.org/10.6084/m9.figshare.c.4007599>.

## Conservation biology

Local extinction of the Asian tiger mosquito (*Aedes albopictus*) following rat eradication on Palmyra Atoll

Kevin D. Lafferty<sup>1,2</sup>, John P. McLaughlin<sup>3</sup>, Daniel S. Gruner<sup>4</sup>, Taylor A. Bogar<sup>3</sup>, An Bui<sup>3</sup>, Jasmine N. Childress<sup>3</sup>, Magaly Espinoza<sup>3</sup>, Elizabeth S. Forbes<sup>3</sup>, Cora A. Johnston<sup>2,4</sup>, Maggie Klope<sup>3</sup>, Ana Miller-ter Kuile<sup>3</sup>, Michelle Lee<sup>3</sup>, Katherine A. Plummer<sup>5</sup>, David A. Weber<sup>5</sup>, Ronald T. Young<sup>3</sup> and Hillary S. Young<sup>3</sup>

<sup>1</sup>Western Ecological Research Center, US Geological Survey, Santa Barbara, CA 93106, USA

<sup>2</sup>Marine Science Institute, and <sup>3</sup>Department of Ecology Evolution and Marine Biology, University of California Santa Barbara, Santa Barbara, CA 93106, USA

<sup>4</sup>Department of Entomology, University of Maryland, College Park, MD 20742, USA

<sup>5</sup>Department of Biology, Stanford University, Stanford, CA 94305, USA

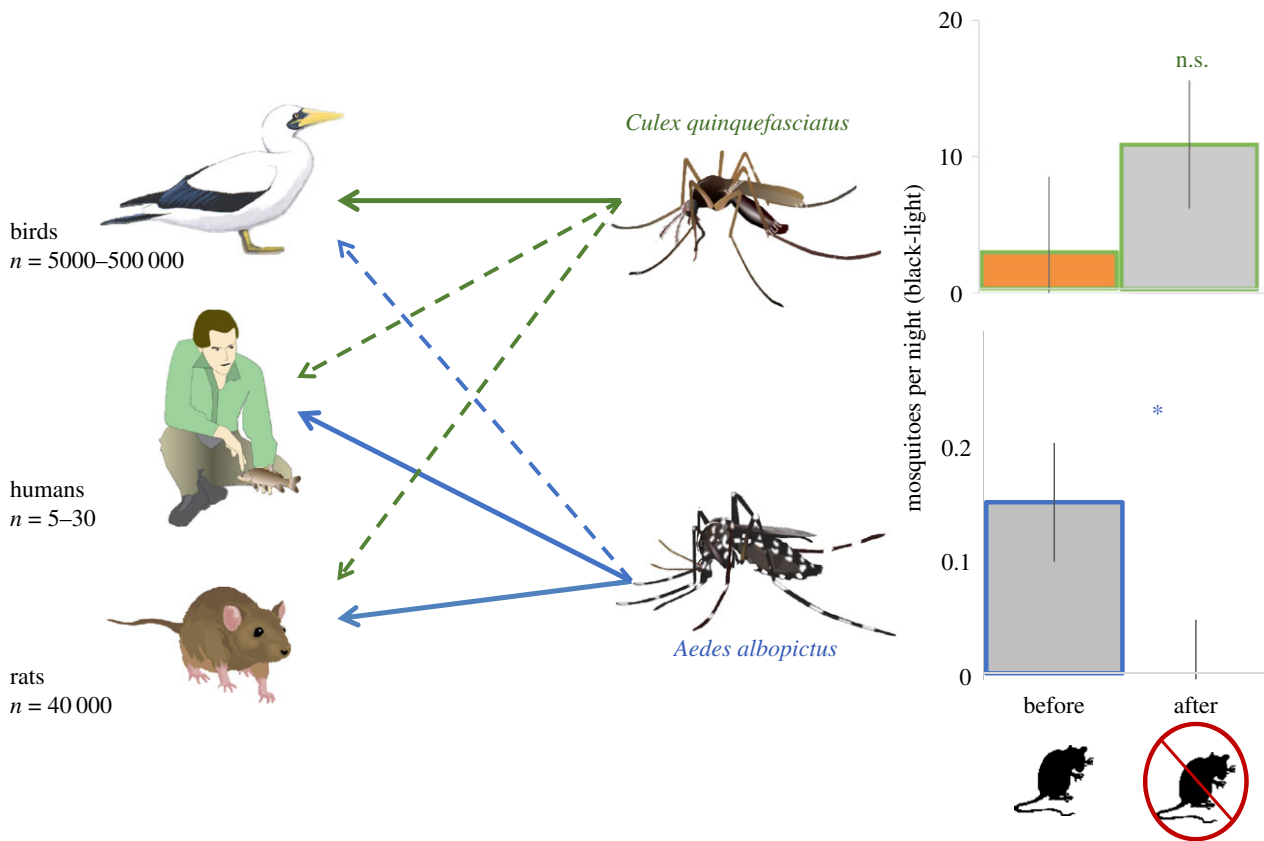
KDL, 0000-0001-7583-4593; DSG, 0000-0002-3153-4297; HSY, 0000-0003-0449-8582

The Asian tiger mosquito, *Aedes albopictus*, appears to have been extirpated from Palmyra Atoll following rat eradication. Anecdotal biting reports, collection records, and regular captures in black-light traps showed the species was present before rat eradication. Since then, there have been no biting reports and no captures over 2 years of extensive trapping (black-light and scent traps). By contrast, the southern house mosquito, *Culex quinquefasciatus*, was abundant before and after rat eradication. We hypothesize that mammals were a substantial and preferred blood meal for *Aedes*, whereas *Culex* feeds mostly on seabirds. Therefore, after rat eradication, humans and seabirds alone could not support positive population growth or maintenance of *Aedes*. This seems to be the first documented accidental secondary extinction of a mosquito. Furthermore, it suggests that preferred host abundance can limit mosquito populations, opening new directions for controlling important disease vectors that depend on introduced species like rats.

## 1. Background

Introduced rats threaten native species (like seabirds), cause economic damage, and can transmit diseases to humans [1]. In response, humans invest billions of dollars in rat control. However, rat eradications have not been linked to mosquito extirpations. This is consistent with the assumption that blood-feeding success does not limit mosquitoes [2]. Under such assumptions, rat declines should increase mosquito bites on humans owing to vector switching (electronic supplementary material). However, because egg laying typically requires a blood meal, it makes sense that mosquito abundance, and perhaps persistence, would depend on blood-feeding success, which itself should increase with host density and suitability [3]. If so, removing preferred hosts such as rats could drive mosquitoes to secondary extinction, thereby reducing bites on humans [4,5] (electronic supplementary material).

Palmyra Atoll has no native mosquitoes, but its wet tropical climate is suitable for the southern house mosquito, *Culex quinquefasciatus* (hereafter *Culex*),



**Figure 1.** *Aedes*, primarily a mammal feeder, likely lost its main blood meal after rat eradication, leading to its coextinction. In contrast, *Culex* uses seabirds and shorebirds as preferred hosts and was less impacted by rat eradication (bars show means and s.e.). Solid lines indicate primary hosts; dashed lines indicate incidental hosts. (Online version in colour.)

and the Asian tiger mosquito, *Aedes albopictus* (hereafter *Aedes*). *Culex* was introduced during World War II [6]; it is small and bites at night, feeding mostly on birds, but also on mammals, including humans [7] (figure 1, top-left panel). Through its bites, this *Culex* species can vector lymphatic filariasis, West Nile fever and Japanese encephalitis. *Aedes* arrived sometime before 2002, when Chris Depkin collected larvae and adults (Bishop Museum accession no. 2018.003). Adult females are large, aggressive day-time biters, with conspicuous striped coloration, preferring mammals, including rats [7], but some *Aedes* populations will feed on birds when mammals are not available [7] (figure 1, bottom-left panel). This *Aedes* species can vector lymphatic filariasis, yellow fever, Rift Valley fever, dengue fever, chikungunya and Zika [8]. Although there have been no documented vectored diseases on Palmyra, both mosquitoes were a nuisance.

In June 2011, the approximately 40 000 rats on Palmyra were eradicated by applying brodifacoum [9]. After rat eradication, rat prey, like palm seedlings and crabs, increased [10]. Although mosquitoes still harassed people in the evenings, visitors found it unnecessary to apply mosquito repellent during the day and began to suspect *Aedes* had been extirpated.

## 2. Material and methods

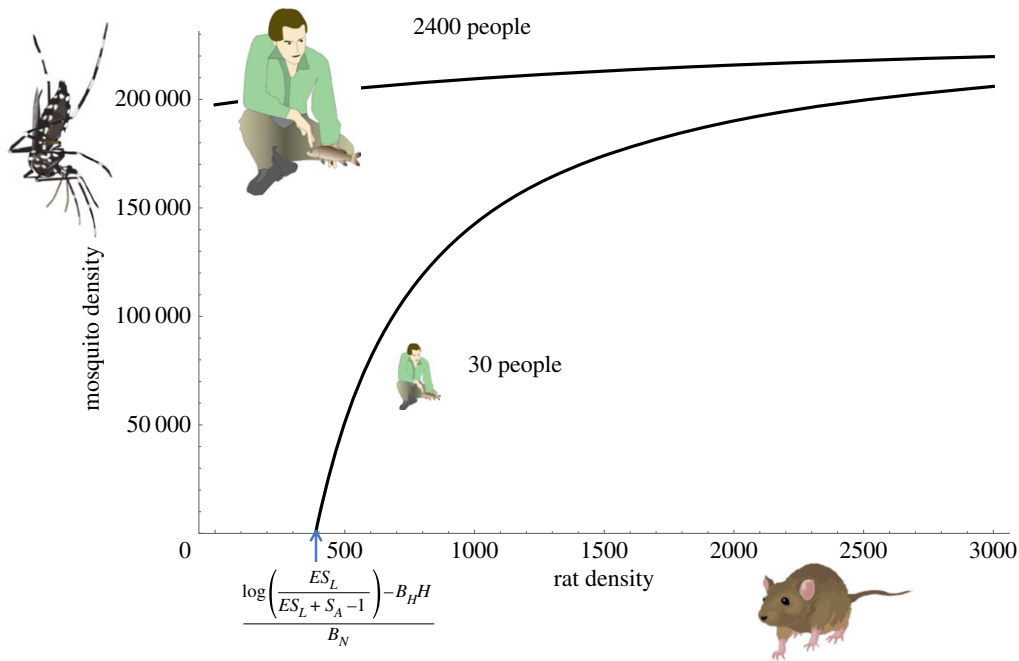
Palmyra Atoll National Wildlife Refuge (5°52' N, 162°04' W) lacks an indigenous human population. The atoll has a saltwater lagoon encircled by two-dozen natural and created islets covered by introduced coconuts or tall native trees and shrubs. Breeding seabirds nest in the native forests, whereas shorebirds use the

flats and shoreline. Although there are no native mammals and few native insects [11], humans (especially a US military occupation in World War II) have introduced rats and many plant and insect species.

In 2009, before rat eradication, we surveyed flying insects with black-light traps (John Hock, New Standard Miniature BlackLight (UV) Trap Model 1212, unbaited, no CO<sub>2</sub>) across 15 islets during 54 nights (electronic supplementary material). All traps were hung 1–2 m above ground level, 1–2 h before dusk and collected 2–3 h after dawn (details in [12]).

After rat eradication, we (i) surveyed researchers about when and how often they were bitten by mosquitoes (see electronic supplementary material), (ii) intensified mosquito survey efforts, and (iii) modified a model [5] describing conditions for mosquito extirpation (electronic supplementary material). We completed 53 trap-nights across 25 islets in 2015 and 80 trap-nights across 24 islets in 2016 (see electronic supplementary material). We also conducted a year-long mosquito-monitoring programme near the main camp on Cooper Island. From 7 December 2015 to 7 August 2017, we hung a black-light trap in the forest, 100 m from camp. This trap was deployed overnight, once a week (during dry weather) 54 times over 20 months. We also used scent traps after rat eradication, because these are more effective than black-light traps for sampling *Aedes* [13]. Scent traps were hung in high human-use areas for eight continuous months (7 January 2015 to 27 June 2015, replacing scent on 22 March 2015). Then, in July and August 2015 we hung a scent trap for 72 h on the three islands where *Aedes* were detected by black-light trap in 2009.

We compared each mosquito species captured per trap-night before and after eradication using a general linear mixed model with island as a random effect (using the square-root transformation on mosquito count to help meet normality assumptions, though we present the untransformed means below). We also



**Figure 2.** Modelled relationship between *Aedes* density and host densities predicts that *Aedes* should not persist without rats and with few humans (electronic supplementary material). (Online version in colour.)

**Table 1.** Relative mosquito abundance, by species, before (2009) and after (2015–2016) rat eradication (2011) using black-light traps, scent traps and biting observations. n.a., not available.

species	method	sensitivity	rats	no. rats
<i>Culex</i>	black-light	moderate	common	common
<i>Culex</i>	scent	moderate	n.a.	common
<i>Culex</i>	anecdotal	highest	common	common
<i>Aedes</i>	black-light	low	uncommon	absent
<i>Aedes</i>	scent	high	n.a.	absent
<i>Aedes</i>	anecdotal	highest	common	absent

calculated the pooled proportional abundance of species trapped (i.e.  $Aedes/(Culex + Aedes)$ ), allowing us to estimate percentage of *Aedes* ( $\pm$  95% CI, binomial exact method) before and after rat eradication.

### 3. Results

In 2009, before rat eradication, *Aedes* ( $0.03 \pm 0.40$  s.e. per trap set) were present, but less abundant per black-light trap-night than were *Culex* ( $2.46 \pm 0.40$  s.e.) ( $p < 0.0001$ , figure 1, right panel), though, because *Aedes* are less likely to be captured by black-light traps [13], this does not imply that *Aedes* were less abundant than *Culex*. Pooling counts per mosquito species across traps suggested that *Aedes* composed 5.9% (2.6%–11.3%, 95% CI) of the mosquito individuals in black-light traps before rat eradication. A simple model suggests that *Aedes* could persist on a dense rat population (e.g. the approximately 40 000 rats present in 2009) or a dense human population (e.g. the 2400 military personnel in World War II), but not under current conditions with no rats and 5–30 humans (figure 2).

After rat eradication, researchers were bitten less often, and almost always at night (electronic supplementary

material). The increased sampling effort captured 35-fold more mosquitoes than before rat eradication (electronic supplementary material). There was no significant difference in *Culex* caught per trap-night before ( $2.7 \pm 5.5$  s.e.) than after ( $10.6 \pm 4.7$  s.e.) rat eradication ( $p = 0.69$ ). However, the zero *Aedes* caught per black-light trap-night after ( $0 \pm 0.047$  s.e.) was significantly less than before ( $0.15 \pm 0.052$  s.e.) rat eradication ( $p = 0.0004$ , figure 1, bottom-right panel). In the pooled samples, *Aedes* composed none (0.00%–0.22%, 95% CI) of the mosquitoes in black-light traps. Pooling the more sensitive scent trap data gave us more confidence that *Aedes* composed none (0.00%–0.12%, 95% CI) of the mosquitoes after rat eradication.

In summary, *Culex* persisted after rat eradication, while *Aedes* went from being present before to undetectable after rat eradication, despite much greater, and more targeted trapping effort (table 1).

### 4. Discussion

Had rat densities simply been reduced rather than eradicated, or had human densities been higher after rat eradication, biting rates on humans could have increased as mosquitoes switched from rats to humans (see figure in electronic supplementary material). Instead, bites from *Aedes* ceased. Our inability to document an *Aedes* bite, or trap an *Aedes* mosquito, over 2 years of sensitive surveillance meets the World Health Organization's standards for demonstrating mosquito eradication [8]. Most mosquito eradications are fleeting, because mosquitoes can soon recolonize. For instance, cycles of *Aedes* eradication and reintroduction followed intensive spraying on Kwajalein Island [14]. The Palmyra eradication seems different: lack of recovery over 6 years suggests that conditions on Palmyra have become unsuitable for *Aedes*.

We hypothesize that *Aedes* was eradicated from Palmyra primarily because its persistence depended on taking blood meals from rats (figure 1). Rat eradication could have also reduced larval habitat because rats open coconut husks, creating suitable habitat for container-breeders like *Aedes* and *Culex* [15]. Larval habitat might have also declined after the 2011 rat eradication, because 2011 and 2012 were drier than average years. However, rainfall records since 2002 indicate both wetter and dryer than average years before and after rat eradication, with no prolonged droughts (see electronic supplementary material), suggesting that such dry periods would not have eradicated *Aedes* on their own. Therefore, we expect this *Aedes* eradication will last as long as rats fail to re-invade Palmyra.

Although there are few documented coextinctions [16], examples include 10 parasitic trematode species that went locally extinct after their snail host was extirpated [17], a rat tick that went extinct along with the Christmas Island rat [18], and 11 bird lice species extirpated when their island-endemic bird hosts went extinct [19]. In fact, *Aedes* is not the only putative secondary extinction associated with the Palmyra rat eradication. Most rats on Palmyra were parasitized with a rodent-specific stomach nematode [20], which must have also gone extinct on the atoll after rat eradication.

These changes in the Palmyra food web show how removing introduced rats can have unintended indirect effects, including eradicating an introduced disease vector.

**Ethics.** All work undertaken with ethical approval of the Palmyra Atoll National Wildlife Refuge. Survey done under UCSB human subjects protocol 2-17-1019.

**Data accessibility.** Datasets have been uploaded as electronic supplementary material.

**Authors' contributions.** K.D.L., J.P.M., D.S.G., and H.S.Y. designed research and wrote the paper. J.P.M., T.A.B., A.B., J.N.C., M.E., E.S.F., C.A.J., M.K., A.M.K., M.L., K.A.P., D.A.W., R.T.Y. and H.S.Y. acquired data. All authors helped draft the manuscript, approved the final version, and agreed to be held accountable for the content therein.

**Competing interests.** We declare we have no competing interests.

**Funding.** This study was funded by NSF DEB award no. 1457371 to H.S.Y. and K.D.L.

**Acknowledgements.** We thank Palmyra Atoll National Wildlife Refuge, US Fish and Wildlife Service, Department of the Interior, the Bishop Museum, the Nature Conservancy and Ken Keenan, Perri Barbour, Rex Tercek, Johanna Fornberg and Ana Sofia Guerra for their assistance. This is contribution PARC-141. Any use of trade, product or firm names in this publication is for descriptive purposes only and does not imply endorsement by the US Government.

## References

- Russell JC, Holmes ND. 2015 Tropical island conservation: rat eradication for species recovery. *Biol. Conserv.* **185**. (doi:10.1016/j.biocon.2015.01.009)
- Aron JL, May RM. 1982 The population dynamics of malaria. In *The population dynamics of infectious diseases: theory and applications* (ed. PM Anderson), pp. 139–179. New York, NY: Springer.
- McLaughlin R, Vidrine M. 1987 *Psorophora columbiae* larval density in southwestern Louisiana rice fields as a function of cattle density. *J. Am. Mosq. Control Assoc.* **3**, 633–635.
- Brodie JF, Aslan CE, Rogers HS, Redford KH, Maron JL, Bronstein JL, Groves CR. 2014 Secondary extinctions of biodiversity. *Trends Ecol. Evol.* **29**, 664–672. (doi:10.1016/j.tree.2014.09.012)
- Sota T, Mogi M. 1989 Effectiveness of zoophylaxis in malaria control: a theoretical inquiry, with a model for mosquito populations with two bloodmeal hosts. *Med. Vet. Entomol.* **3**, 337–345. (doi:10.1111/j.1365-2915.1989.tb00240.x)
- Hu SMK. 1950 Notes and proceedings. *Proc. Hawaiian Entomol. Soc.* **14**, 1–21.
- Faraji A, Egizi A, Fonseca DM, Unlu I, Crepeau T, Healy SP, Gaugler R. 2014 Comparative host feeding patterns of the Asian tiger mosquito, *Aedes albopictus*, in urban and suburban northeastern USA and implications for disease transmission. *PLoS Negl. Trop. Dis.* **8**, e3037. (doi:10.1371/journal.pntd.0003037)
- World Health Organization. 2017 *Vector-borne diseases. Fact sheet No. 387, October 2017*. Geneva: WHO.
- Wegmann A, Flint E, White S, Fox M, Howald G, McClelland P, Alifano A, Griffiths R. 2012 Pushing the envelope in paradise: a novel approach to rat eradication at Palmyra Atoll. In *Proc. 25th Vertebrate Pest Conf., Monterey, CA, 5–8 March 2012* (ed. RM Timm), pp. 48–53. Davis, CA: University of California Davis.
- Nigro KM, Hathaway SA, Wegmann AS, Miller-ter Kuile A, Fisher RN, Young HS. 2017 Stable isotope analysis as an early monitoring tool for community-scale effects of rat eradication. *Restor. Ecol.* **25**, 1015–1025. (doi:10.1111/rec.12511)
- Handler AT, Gruner DS, Haines WP, Lange MW, Kaneshiro KY. 2007 Arthropod surveys on Palmyra Atoll, Line Islands, and insights into the decline of the native tree *Pisonia grandis* (Nyctaginaceae) 1. *Pac. Sci.* **61**, 485–502. (doi:10.2984/1534-6188(2007)61[485:ASOPAL]2.0.CO;2)
- Young HS, McCauley DJ, Dunbar RB, Hutson MS, Ter-Kuile AM, Dirzo R. 2013 The roles of productivity and ecosystem size in determining food chain length in tropical terrestrial ecosystems. *Ecology* **94**, 692–701. (doi:10.1890/12-0729.1)
- Farajollahi A, Kesavaraju B, Price DC, Williams GM, Healy SP, Gaugler R, Nelder MP. 2009 Field efficacy of BG-Sentinel and industry-standard traps for *Aedes albopictus* (Diptera: Culicidae) and West Nile virus surveillance. *J. Med. Entomol.* **46**, 919–925. (doi:10.1603/033.046.0426)
- Joyce C. 1961 Potentialities for accidental establishment of exotic mosquitoes in Hawaii. *Proc. Hawaiian Entomol. Soc.* **17**, 403–413. (doi:10.1252/10832)
- Samarawickrema W, Jayasekera N, Jansen C, Chelliah R, Karandawala F, Pathmanathan S. 1982 Significance of coconut husk pits as larval habitats of *Culex quinquefasciatus* (Say) in the filariasis endemic coastal belt of Sri Lanka. *Southeast Asian J. Trop. Med. Public Health* **13**, 590–595.
- Moir ML, Vesik PA, Brennan KE, Keith DA, Hughes L, McCarthy MA. 2010 Current constraints and future directions in estimating coextinction. *Conserv. Biol.* **24**, 682–690. (doi:10.1111/j.1523-1739.2009.01398.x)
- Torchin ME, Byers JE, Huspeni TC. 2005 Differential parasitism of native and introduced snails: replacement of a parasite fauna. *Biol. Invasions* **7**, 885–894. (doi:10.1007/s10530-004-2967-6)
- Wyatt KB, Campos PF, Gilbert MTP, Kolokotronis SO, Hynes WH, DeSalle R, Daszak P, MacPhee RD, Greenwood AD. 2008 Historical mammal extinction on Christmas Island (Indian Ocean) correlates with introduced infectious disease. *PLoS ONE* **3**, e3602. (doi:10.1371/journal.pone.0003602)
- Mey E. 2005 [A new extinct louse (Insecta, Phthiraptera, Amblycera) from the Cuban macaw *Ara tricolor* (Psittaciformes), together with an annotated overview about fossil and recently extinct animal lice]. *Anz. Ver. Thuring Ornithol.* **5**, 201–217.
- Lafferty KD, Hathaway SA, Wegmann AS, Shipley FS, Backlin AR, Helm J, Fisher RN. 2010 Stomach nematodes (*Mastophorus muris*) in rats (*Rattus rattus*) are associated with coconut (*Cocos nucifera*) habitat at Palmyra Atoll. *J. Parasitol.* **96**, 16–20. (doi:10.1645/GE-2180.1)